



Präzisions-WINKEL-Rolle

Typ PR

Axialrolle fest

Vorteil:

■ weniger Spiel zwischen Rolle und Profil

Nachschmierbarkeit für Rollen PR 4.054 - PR 4.063



Precision WINKEL Bearing

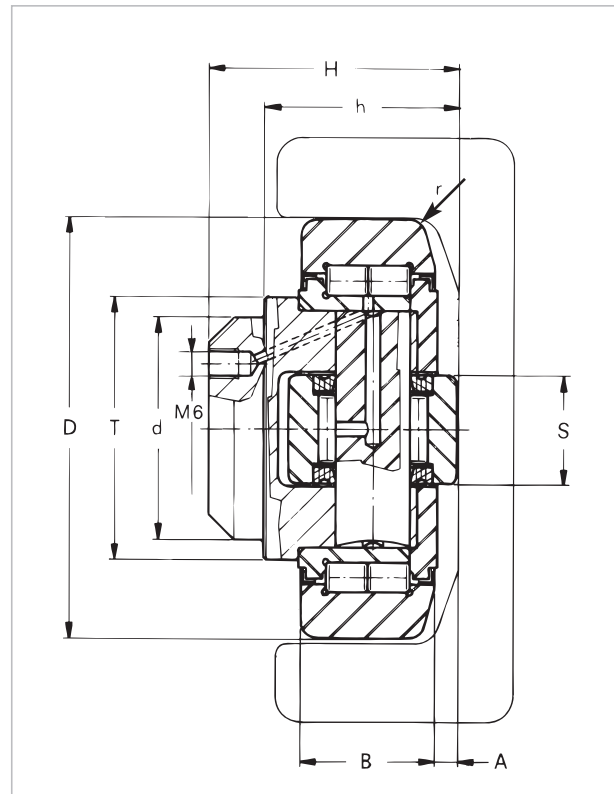
Type PR


Axial Bearing fixed

Advantage:

■ less clearance between bearing and profile

Relubrication for types PR 4.054 - PR 4.063



 Nachschmiersysteme für WINKEL-Rollen
Lubrication systems for WINKEL bearings
(Seite/page 144)

Typ Type	Artikel-Nr. Article no.	D mm D mm	T mm T mm	d -0.05 mm d -0.05 mm	H mm H mm	h mm h mm	B mm B mm	A mm A mm	S mm S mm	r mm r mm
PR 4.054	200.100.000	64,8	42	30	37,5	30,5	20	2,5	20	3
PR 4.055	200.101.000	73,8	48	35	44,0	36,0	23	2,5	22	4
PR 4.056	200.102.000	81,8	54	40	48,0	36,5	23	3,0	26	4
PR 4.058	200.103.000	92,8	59	45	57,0	44,0	30	3,5	26	3
PR 4.061	200.104.000	111,8	71	60	69,0	55,0	31	4,0	34	5
PR 4.062	200.105.000	127,8	80	60	72,3	56,0	37	5,0	40	5
PR 4.063	200.106.000	153,8	103	60	77,5	58,5	45	5,5	50	3

C = Dyn. Tragzahl Radiallager (ISO 281/1), C_0 = Stat. Tragzahl Radiallager (ISO 76)

C_A = Dyn. Tragzahl Axiallager (ISO 281/1), C_{0A} = Stat. Tragzahl Axiallager (ISO 76)

F_R = Tragzahl Radiallager zulässige Belastung zwischen Rolle und Profil

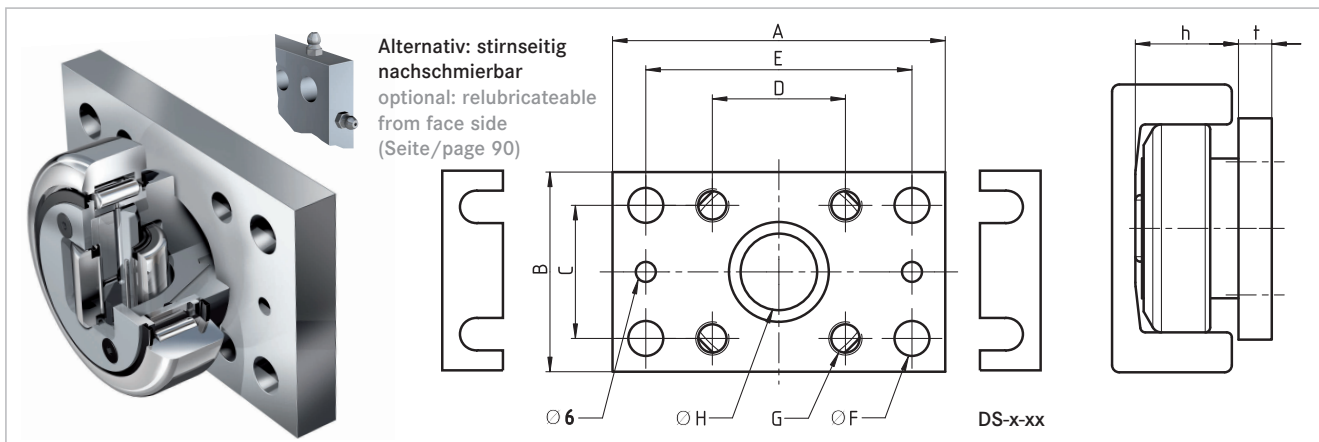
F_A = Tragzahl Axiallager zulässige Belastung zwischen Rolle und Profil

WINKEL-Rollen | WINKEL Bearings



Passende Anschraubplatten

Suitable flange plates

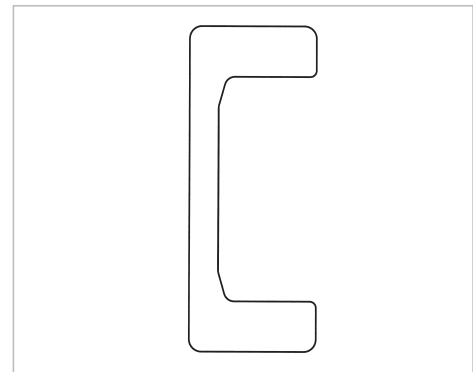
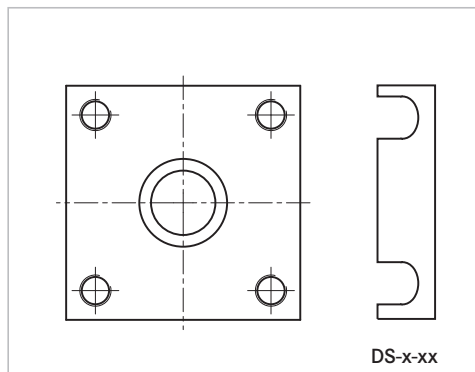


Typ Type	Artikel-Nr. Article no.	A	B	C	D	E	Ø F Ø F	G	Ø H Ø H	t	Distanzsteckblech 0,5mm Washer 0.5mm	Distanzsteckblech 1,0mm Washer 1.0mm		
AP 0	212.003.000	100	60	40	40	80	10,5	M10	30	10	DS-0-0,5	238.020.000	DS-0-1,0	238.020.001
AP 1	212.004.000	120	80	50	50	90	12,5	M12	35	15	DS-1-0,5	238.021.000	DS-1-1,0	238.021.001
AP 2	212.005.000	120	80	50	50	90	12,5	M12	40	15	DS-2-0,5	238.021.000	DS-2-1,0	238.021.001
AP 3.1	212.006.001	160	100	60	60	120	17,0	M16	45	20	DS-3.1-0,5	238.105.000	DS-3.1-1,0	238.105.001
AP 4	212.007.001	180	120	80	80	140	17,0	M16	60	20	DS-4-0,5	238.023.000	DS-4-1,0	238.023.001
AP 6	212.008.000	200	150	100	100	160	17,0	M16	60	20	DS-6-0,5	238.024.000	DS-6-1,0	238.024.001

Abstreifer Seite 94
Wiper page 94

Anschraubplatten quadratisch Reihe AP-Q S. 96
Flange plates square series AP-Q page 96

Profile Seite 72
Profiles page 72



Typ Type	F _r kN F _r kN	F _A kN F _A kN	C kN C kN	C ₀ kN C ₀ kN	C _A kN C _A kN	C _{0A} kN C _{0A} kN	u/min max. r/pm max.	Gewicht kg Weight kg	Anschraubplatten Flange plates	Profile Profiles
PR 4.054	10,30	3,20	31,0	35,5	11	11	900	0,55	AP0 AP0-LUB AP0-Q	PR 0 NbV
PR 4.055	12,40	3,87	45,5	51,0	13	14	900	0,85	AP1 AP1-LUB AP1-Q	PR 1 NbV
PR 4.056	12,90	4,00	48,0	56,8	18	18	800	1,10	AP2 AP2-LUB AP2-Q	PR 2 NbV
PR 4.058	22,40	7,00	68,0	72,0	23	23	750	1,70	AP3.1 AP3.1-LUB AP3-Q	PR 3 NbV
PR 4.061	23,80	7,44	81,0	95,0	31	36	650	2,95	AP4 AP4-LUB AP4-Q	PR 4 NbV
PR 4.062	33,90	10,60	110,0	132,0	43	50	550	4,10	AP4 AP4-LUB AP4-Q	PR 5 NbV
PR 4.063	59,20	18,50	151,0	192,0	68	71	450	6,85	AP6 AP6-LUB AP6-Q	PR 6 NbV

C = Dynamic load capacity radial bearing (ISO 281/1), C₀ = Static load capacity radial bearing (ISO 76)

C_A = Dynamic load capacity axial bearing (ISO 281/1), C_{0A} = Static load capacity axial bearing (ISO 76)

F_r = Load capacity radial bearing max. allowable force between bearing and profile

F_A = Load capacity axial bearing max. allowable force between bearing and profile