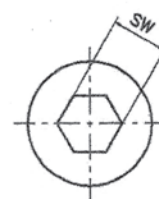
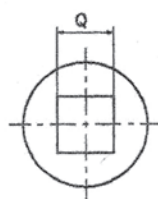
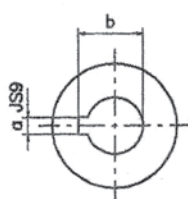
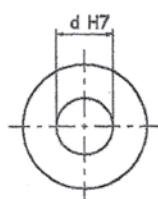
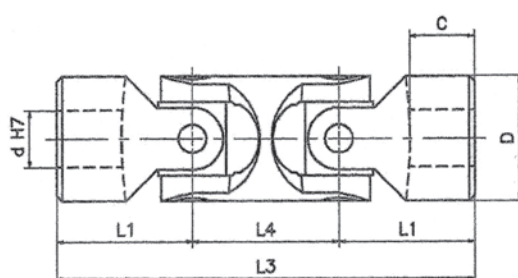




## Dvojité klouby nerezové s kluzným uložením

Série X

Max. úhel: 90°



| Typ         | Kód       | d  | D  | L3  | L1 | L4 | C  | a* | b*   | Q* | SW* | Hmot. [kg] |
|-------------|-----------|----|----|-----|----|----|----|----|------|----|-----|------------|
| <b>01XD</b> | SXOD 0600 | 6  | 16 | 56  | 17 | 22 | 8  | 2  | 7    | 6  | 6   | 0,08       |
| <b>02XD</b> | SXOD 0800 | 8  | 16 | 62  | 20 | 22 | 11 | 2  | 9    | 8  | 8   | 0,08       |
| <b>03XD</b> | SXOD 1000 | 10 | 22 | 74  | 24 | 26 | 12 | 3  | 11,4 | 10 | 10  | 0,15       |
| <b>04XD</b> | SXOD 1200 | 12 | 25 | 86  | 28 | 30 | 13 | 4  | 13,8 | 12 | 12  | 0,25       |
| <b>1XD</b>  | SXOD 1600 | 16 | 32 | 104 | 34 | 36 | 16 | 5  | 18,3 | 16 | 16  | 0,45       |
| <b>3XD</b>  | SXOD 2000 | 20 | 42 | 128 | 41 | 46 | 18 | 6  | 22,8 | 20 | 20  | 1,00       |
| <b>5XD</b>  | SXOD 2500 | 25 | 50 | 163 | 54 | 55 | 26 | 8  | 28,3 | 25 | 25  | 2,00       |
| <b>6XD</b>  | SXOD 3000 | 30 | 58 | 190 | 61 | 68 | 29 | 8  | 33,3 | 30 | 30  | 2,90       |