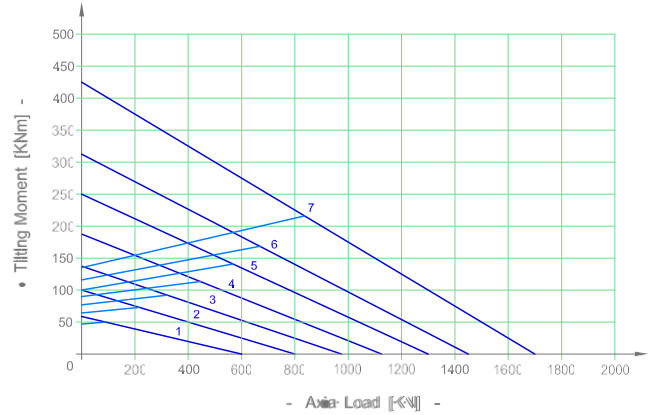
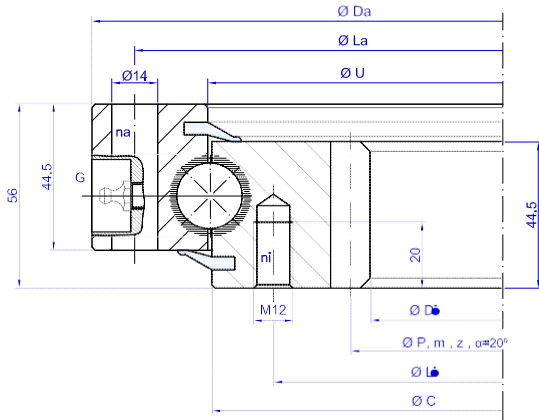


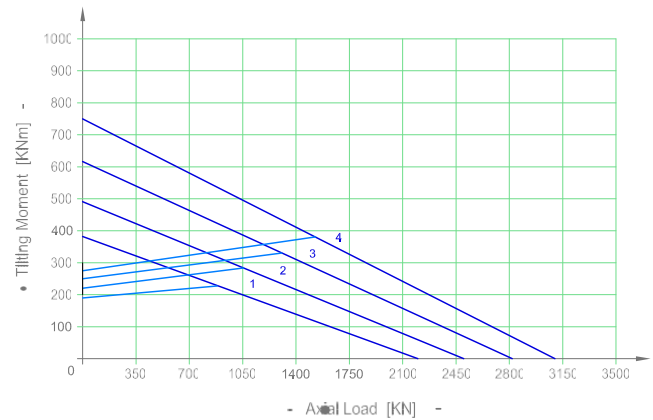
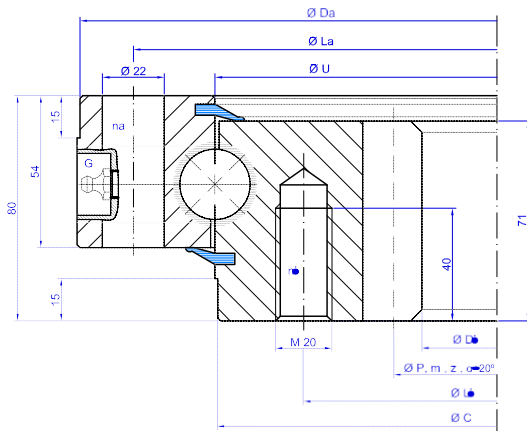
I.20.B



Bearing Type	Dimensions				Fixing holes				Gear teeth			Tooth Force		Mass
	Da mm	U mm	C mm	Di mm	La mm	na n°	Li mm	ni n°	P mm	m	z n°	Fz nor KN	Fz max KN	Weight KG
1 I.486.20.00.B	486	415,5	412,5	325	460	24	375	24	335	5	67	17,7	24,7	31
2 I.616.20.00.B	616	545,5	542,5	444	590	32	505	32	456	6	76	21,4	30	42
3 I.716.20.00.B	716	645,5	642,5	546	690	36	605	36	558	6	93	21,4	30	50
4 I.816.20.00.B	816	745,5	742,5	648	790	40	705	40	660	6	110	21,4	30	58
5 I.916.20.00.B	916	845,5	842,5	736	890	40	805	40	752	8	94	28,5	39,9	69
6 I.1016.20.00.B	1016	945,5	942,5	840	990	44	905	44	856	8	107	28,5	39,9	76
7 I.1166.20.00.B	1166	1095,5	1092,5	984	1140	48	1055	48	1000	8	125	28,5	39,9	91

G = N°4 x Grease nipples DIN 71412 AM 8x1 equally-spaced Ask for a detailed drawing of the bearing, values may differ.

I.25.B



Bearing Type	Dimensions				Fixing holes				Gear teeth			Tooth Force		Mass
	Da -IT8 mm	U mm	C -IT8 mm	Di mm	La mm	na n°	Li mm	ni n°	P mm	m	z n°	Fz nor KN	Fz max KN	Weight KG
1 I.855.25.00.B	853	756	755	610	815	24	694	24	630	10	63	55,5	77,7	119
2 I.955.25.00.B	953	856	855	710	915	28	794	28	730	10	73	55,5	77,7	137
3 I.1055.25.00.B	1053	956	955	810	1015	30	894	30	830	10	83	55,5	77,7	149
4 I.1155.25.00.B	1153	1056	1055	910	1115	30	994	30	930	10	93	55,5	77,7	165

G = N°4 x Grease nipples DIN 71412 AM 10x1 equally-spaced Ask for a detailed drawing of the bearing, values may differ.