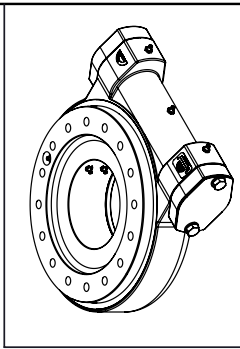
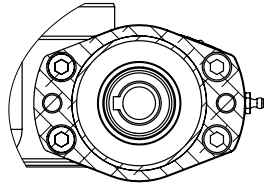
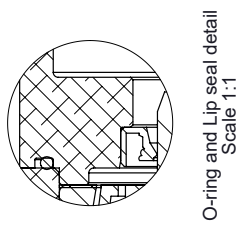
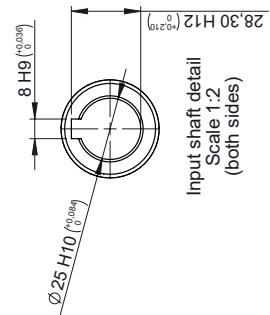


LBE SERIES

METRIC

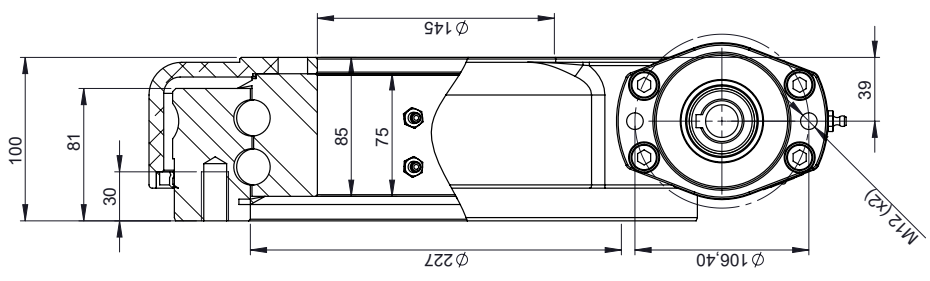
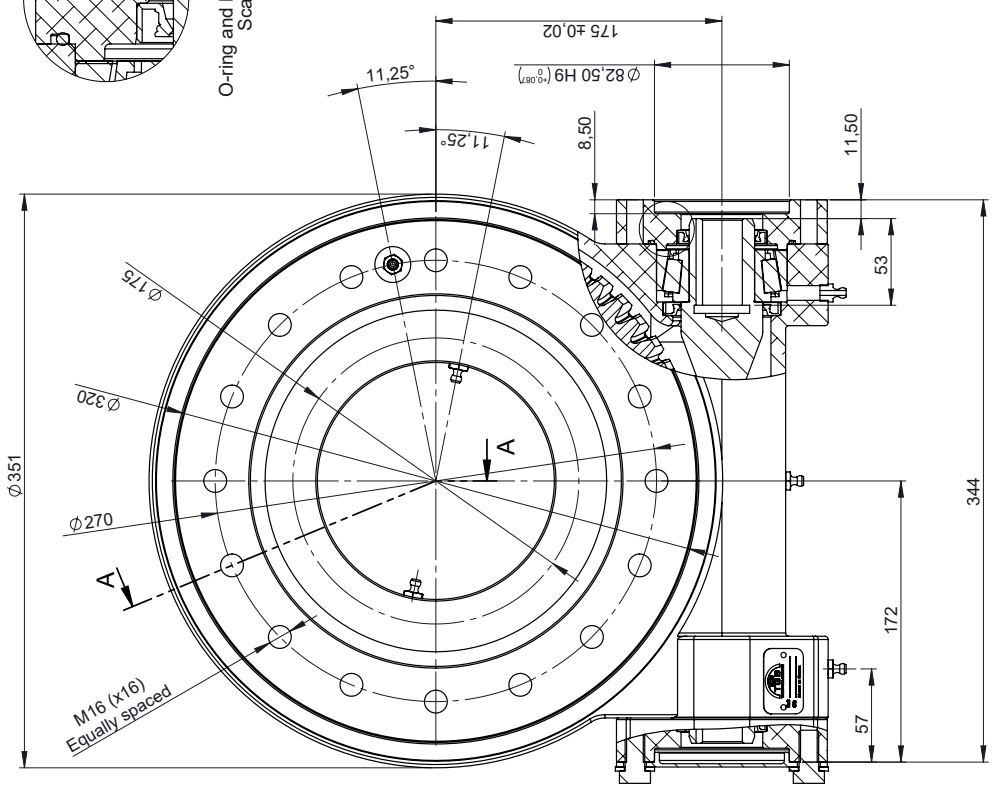


TGB GROUP
www.TGBGROUP.COM

Rev C

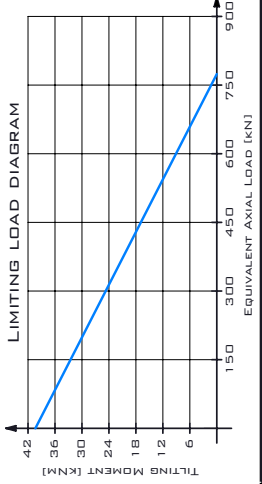
Reference: LBE314-2B-Z1

Denomination	Sales drawing		
MATERIAL:	WEIGHT [kg]:	44.71	NUM. PIECES: 1
SCALE:	1:3	SIZE: A3	SHEET: 1 of 1



SHAFT: Ø25MM KEYS KEYED SHAFT
FLANGE: SAE - 2BOLT FLANGE

The information on this sheet is the property of TGB Group. It is not to be used for any other purpose without the express written consent of TGB Group. TGB Group reserves the right to change the design of the product without notice.



MAIN PERFORMANCE PARAMETERS	
GEAR RATIO	6:1:1
EFFICIENCY	40%
SELF-LOCKING GEAR	YES
BACKLASH CLEARANCE	< 0,17°
NOMINAL TORQUE	9.100NM
MAXIMUM TORQUE	4.480NM
NOTES: ALL SLEW DRIVE ARE PRE-LUBRICATED. MAXIMUM OUTPUT SPEED: 1 RPM. STANDARD PAINT: FOR CORROSION CATEGORY C3-M - COLOR RAL 9005	

MINIMUM INPUT TORQUE: 25NM

M16 (x14) ± 30mm
Based on 16 holes