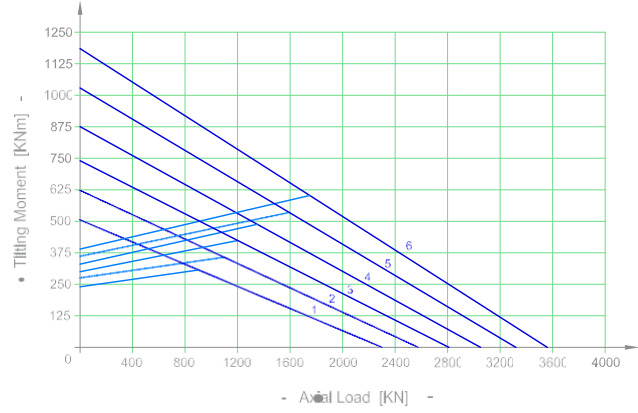
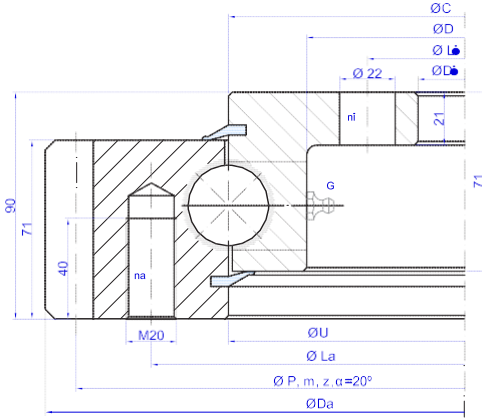


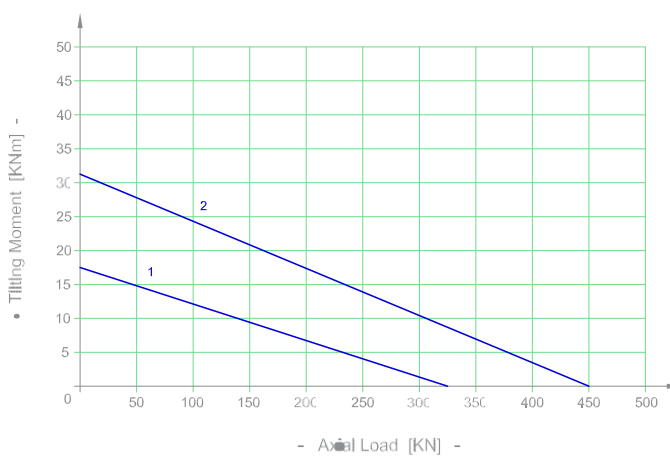
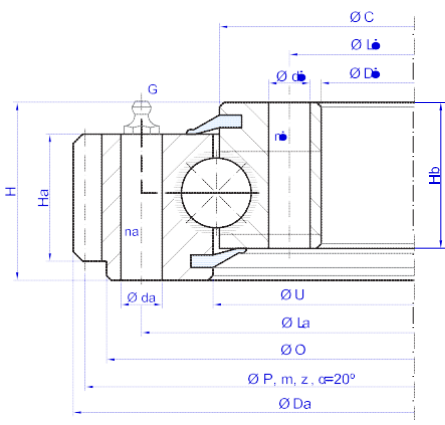
E.32.C



Bearing Type	Dimensions					Fixing holes				Gear teeth			Tooth Force		Mass
	Da mm	U mm	C mm	D mm	Di mm	La mm	na n°	Li mm	ni n°	P mm	m	z n°	Fz nor KN	Fz max KN	Weight KG
1 E.1100.32.00.C	1098	955	955	893	805	1016	30	845	30	1080	9	120	49,9	69,9	165
2 E.1200.32.00.C	1200	1055	1055	993	905	1116	30	945	30	1180	10	118	55,5	77,6	183
3 E.1300.32.00.C	1300	1155	1155	1093	1005	1216	36	1045	36	1280	10	128	55,5	77,6	200
4 E.1400.32.00.C	1400	1255	1255	1193	1105	1316	42	1145	42	1380	10	138	55,5	77,6	216
5 E.1500.32.00.C	1500	1355	1355	1293	1205	1416	42	1245	42	1480	10	148	55,5	77,6	234
6 E.1600.32.00.C	1600	1455	1455	1393	1305	1516	48	1345	48	1580	10	158	55,5	77,6	250

G = N°6 x Grease nipples DIN 71412 AM 10x1 equally-spaced Ask for a detailed drawing of the bearing, values may differ.

E.22.D



Bearing Type	Dimensions							Fixing holes				Gear teeth			Tooth Force		Mass		
	Da mm	O mm	U mm	D mm	Ha mm	Hb mm	H mm	La mm	na n°	da mm	Li mm	ni n°	di mm	P mm	m	z n°	Fz nor KN	Fz max KN	Weight KG
1 E.318.22.00.D.1	318	297	230	162	40	46	56	275	20	13	182	20-1	13	310,5	4,5	69	14,3	20	17
2 E.403.22.00.D.1	403,5	380	310	235	39	47	55	358	24	13	259	28-1	13	396	4,5	88	14,3	20	23

G = N°2 x Grease nipples DIN 71412 AM 10x1 equally-spaced Ask for a detailed drawing of the bearing, values may differ.