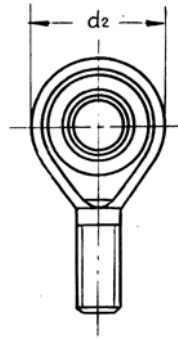
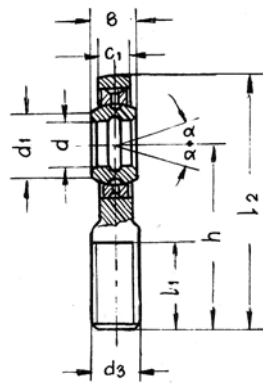
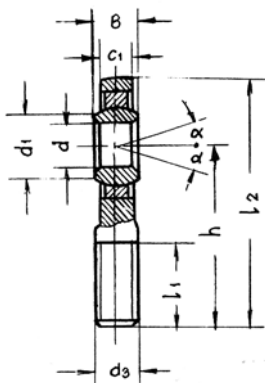


Kloubová oka s vnějším závitem série E



	Ekvivalent	SKF	SA...E/ES SA...E
	Ekvivalent	INA	SA...ES-2RS SA...ES/SAA...ES GAR...DO GAR...DO-2RS
	Ekvivalent	SKF	SA...C SA...C
	Ekvivalent	INA	SA...C-2RS SAA...TE-2RS GAR...UK GAR...UK-2RS

Typ	Rozměry [mm]										Zatížení [kN]		α	Hmot. [Kg]
	d	B	c_1 max.	d_1 min.	d_2 max.	d_3	h	l_1 min.	l_2 max.	Dynamic	Static			
SA5E	5	6	4.5	7	21	M5	36	16	48	3.4	8.1	1	0.011	
SA6E	6	6	4.5	8	21	M6	36	16	48	3.4	8.1	13	0.013	
SA8E	8	8	6.5	10	24	M8	42	21	55	5.5	12.9	15	0.026	
SA10E	10	9	7.5	13	29	M10	48	26	63	8.1	17.8	12	0.044	
SA12E	12	10	8.5	15	34	M12	54	28	71	10.8	24.5	10	0.066	
SA15ES	SA15ES-2RS	15	12	10.5	18	40	M14	63	34	83	17	36	8	0.121
SA17ES	SA17ES-2RS	17	14	11.5	20	46	M16	69	36	92	21	45	10	0.172
SA20ES	SA20ES-2RS	20	16	13.5	24	53	M20x1.5	78	43	105	30	60	9	0.283
SA25ES	SA25ES-2RS	25	20	18	29	64	M24x2	94	53	126	48	83	7	0.504
SA30ES	SA30ES-2RS	30	22	20	34	73	M30x2	110	65	147	62	110	6	0.835
SA35ES	SA35ES-2RS	35	25	22	39	82	M36x3	140	82	182	80	148	6	1.41
SA40ES	SA40ES-2RS	40	28	24	45	92	M39x3	150	86	198	100	180	7	1.86
SA45ES	SA45ES-2RS	45	32	28	50	102	M42x3	163	92	217	127	240	7	2.57
SA50ES	SA50ES-2RS	50	35	31	55	112	M45x3	185	104	246	156	290	6	3.58
SA60ES	SA60ES-2RS	60	44	39	66	135	M52x3	210	115	282	245	450	6	5.73
SA70ES	SA70ES-2RS	70	49	43	77	160	M56x4	235	125	318	315	610	6	7.94
SA80ES	SA80ES-2RS	80	55	48	88	180	M64x4	270	140	365	400	750	6	12.06

Uložení ocel/ocel

Typ	Rozměry [mm]										Zatížení [kN]		α	Hmot. [Kg]
	d	B	c_1 max.	d_1 min.	d_2 max.	d_3	h	l_1 min.	l_2 max.	Dynamic	Static			
SA6C	6	6	4.5	8	21	M6	42	21	48	3.4	8.1	13	0.013	
SA8C	8	8	6.5	10	24	M8	42	21	55	5.5	12.9	15	0.026	
SA10C	10	9	7.5	13	29	M10	48	26	63	8.1	17.6	12	0.044	
SA12C	12	10	8.5	15	34	M12	54	28	71	10.8	24.5	10	0.066	
SA15C	15	12	10.5	18	40	M14	63	34	83	17	36	8	0.121	
SA17C	17	14	11.5	20	46	M16	69	36	92	21	45	10	0.172	
SA20C	20	16	13.5	24	53	M20x1.5	78	43	105	30	60	9	0.283	
SA25C	25	20	18	29	64	M24x2	94	53	126	48	83	7	0.504	
SA30C	30	22	20	34	73	M30x2	110	65	147	62	110	6	0.835	
	SA35C-2RS	35	25	22	39	82	M36x3	140	82	182	80	146	6	1.41
	SA40C-2RS	40	28	24	45	92	M39x3	150	86	198	100	180	7	1.86
	SA45C-2RS	45	32	28	50	102	M42x3	163	92	217	127	240	7	2.57
	SA50C-2RS	50	35	31	55	112	M45x3	185	104	246	156	290	6	3.58
	SA60C-2RS	60	44	39	66	135	M52x3	210	115	282	245	450	6	5.73
	SA70C-2RS	70	49	43	77	160	M56x4	235	125	318	315	610	6	7.94
	SA80C-2RS	80	55	48	88	180	M64x4	270	140	365	400	750	6	12.06

Uložení ocel/PTFE - bezúdržbové