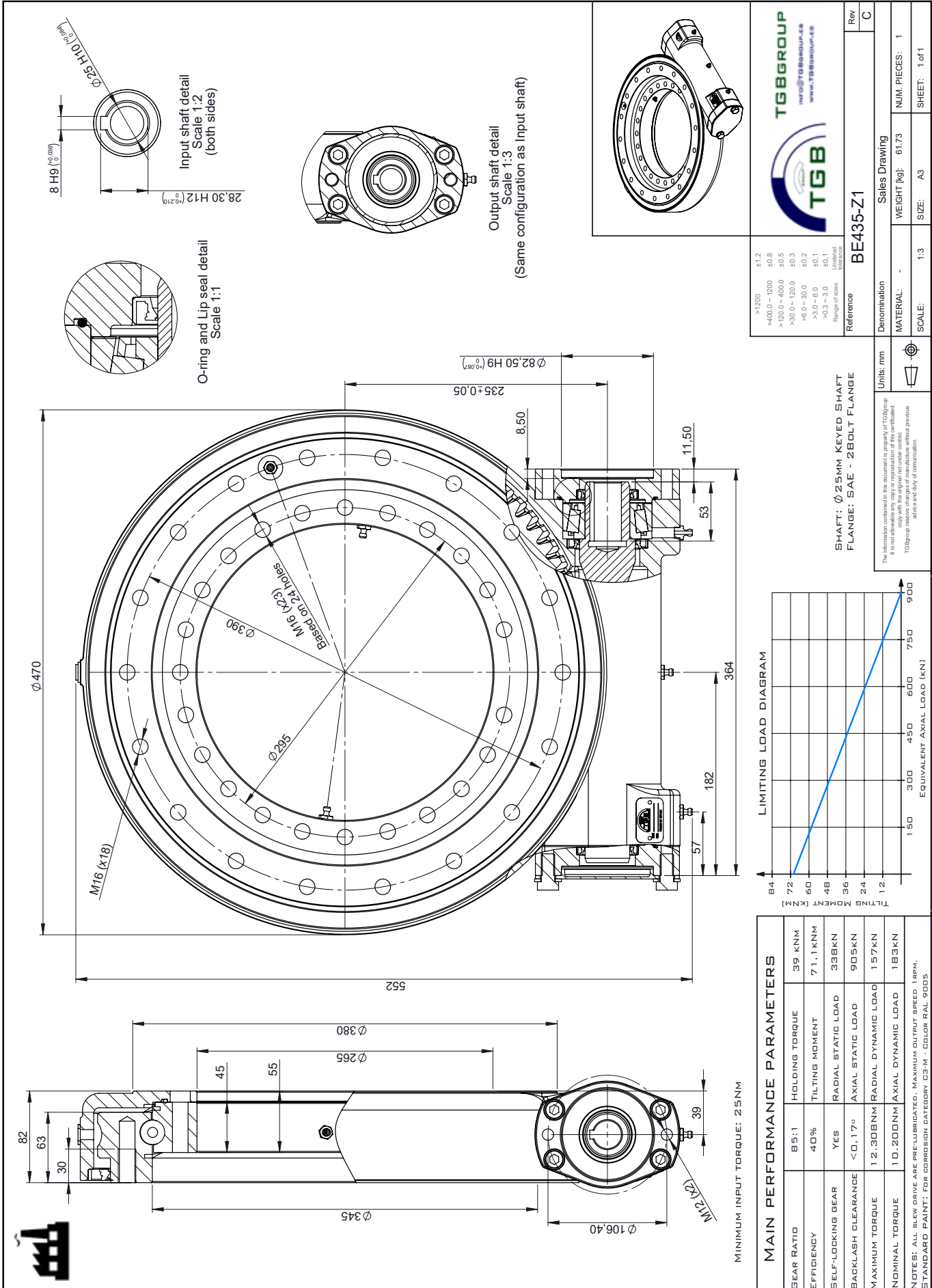


# BE SERIES

## METRIC



Reference	BE435-Z1
Denomination	Sales Drawing
MATERIAL:	WEIGHT [kg]: 61.73
SCALE:	SIZE: A3
NUM. PIECES:	1
SHEET:	1 of 1

Units: mm

The information on this document is the property of TGBgroup. It is not to be used, reproduced or disseminated without the express written consent of TGBgroup. TGBgroup reserves the right to modify the information without notice.

MAIN PERFORMANCE PARAMETERS	
GEAR RATIO	85:1
HOLDING TORQUE	39 kNm
EFFICIENCY	40%
TILTING MOMENT	71.1 kNm
SELF-LOCKING GEAR	YES
RADIAL STATIC LOAD	338kN
AXIAL STATIC LOAD	905kN
RADIAL DYNAMIC LOAD	157kN
AXIAL DYNAMIC LOAD	183kN
NOMINAL TORQUE	10,200 Nm
MAXIMUM TORQUE	12,300 Nm
BACKLASH CLEARANCE	< 0,17°
MAXIMUM TORQUE	12,300 Nm
AXIAL DYNAMIC LOAD	157kN
AXIAL DYNAMIC LOAD	183kN

NOTES: ALL BEW DRIVE ARE PRE-LUBRICATED. MAXIMUM OUTPUT SPEED: 1800 RPM.  
STANDARD PAINT: FOR CORROSION CATEGORY C3-M - COLOR RAL 9005